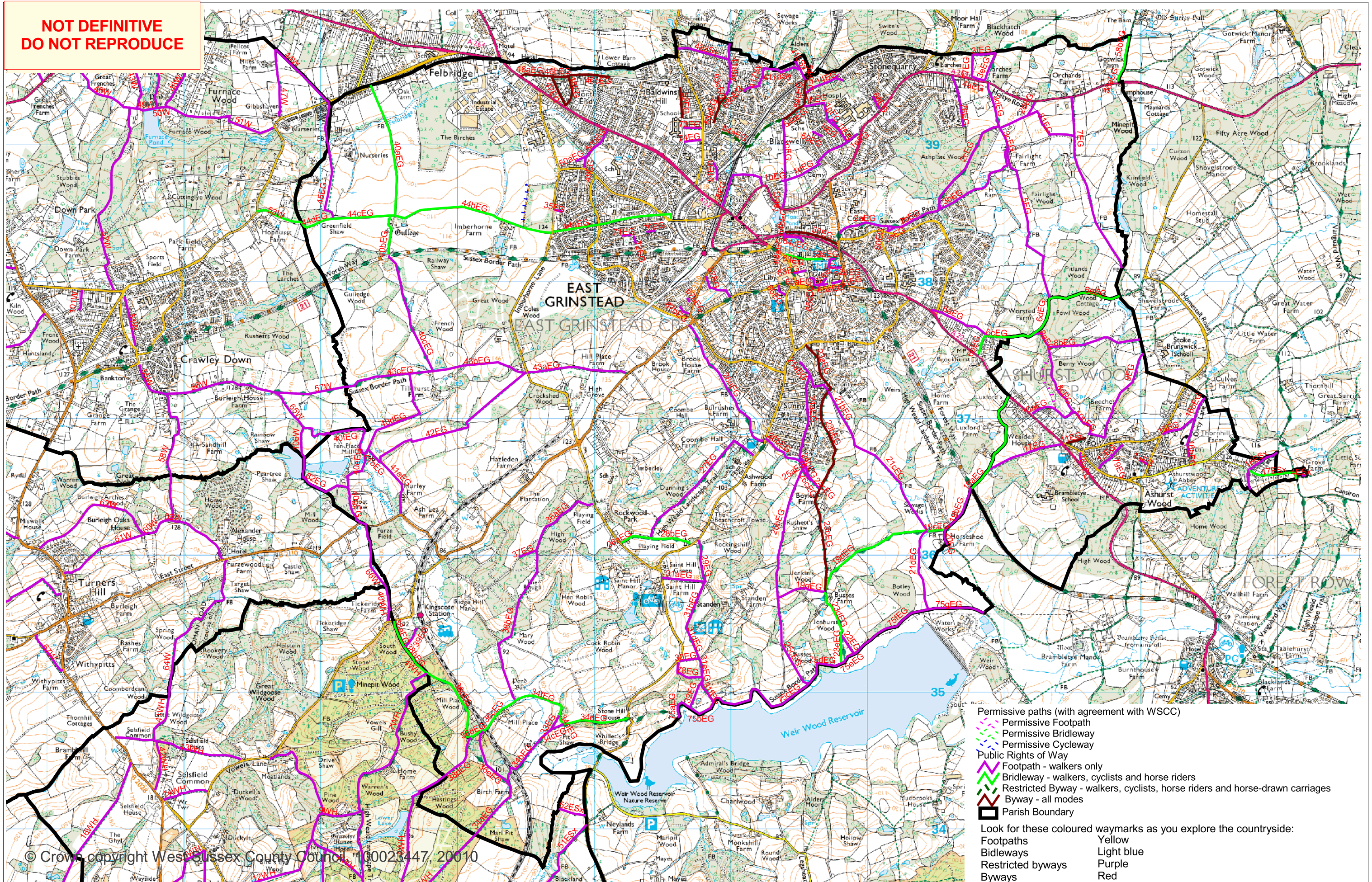


**NOT DEFINITIVE  
DO NOT REPRODUCE**



© Crown copyright West Sussex County Council, 00023447, 20010

- Permissive paths (with agreement with WSCC)
  - Permissive Footpath
  - Permissive Bridleway
  - Permissive Cycleway
  - Public Rights of Way
  - Footpath - walkers only
  - Bridleway - walkers, cyclists and horse riders
  - Restricted Byway - walkers, cyclists, horse riders and horse-drawn carriages
  - Byway - all modes
  - Parish Boundary
- Look for these coloured waymarks as you explore the countryside:
- |                   |            |
|-------------------|------------|
| Footpaths         | Yellow     |
| Bideways          | Light blue |
| Restricted byways | Purple     |
| Byways            | Red        |



August 2011  
Public Rights of Way  
West Sussex County Council

# East Grinstead

This information can also be viewed at [www.westsussex.gov.uk/iMap](http://www.westsussex.gov.uk/iMap)  
For further information on Public Rights of Way visit [www.westsussex.gov.uk/prow](http://www.westsussex.gov.uk/prow)



This map is reproduced from Ordnance Survey material with the permission of Ordnance Survey on behalf of the Controller of Her Majesty's Stationery Office. Unauthorised reproduction infringes Crown copyright and may lead to prosecution or civil proceedings.