

SOUTHEAST COMMUNITIES RAIL PARTNERSHIP



2022 Annual Review

WORKING IN PARTNERSHIP
connecting communities with places and opportunities



Tim Barkley



Bob Lanzer



Foreword

By Tim Barkley (SCRP board chair) and Bob Lanzer (Stakeholder Advisory Board chair)

Welcome to our look-back at 2022 – a year of change both nationally and in the life of the Southeast Communities Rail Partnership.

In the last 12 months we have emerged from the Covid pandemic and had to adjust our way of interacting with partners and volunteers. At the same time, train operators have moved from the franchise system to National Rail Contracts and the transition to Great British Railways continues to be in the background.

While all that has been taking place at national level, we have remained focused on our core work of connecting communities to their railways.

It has been especially pleasing this year to see the completion of some long-standing – and much-needed – projects to improve accessibility at stations and to bring redundant station buildings back

to life. You can read more about the schemes on the individual line pages in this report. Even though the schemes have been in different locations across our region with different challenges and different personnel, they have all shared the same commitment, drive and perseverance of community volunteers working in partnership with train operators, Network Rail, SCRP staff and others to achieve a common goal.

We also delivered some fantastic and innovative projects to mark the Platinum Jubilee in June.

Our work has been recognised once again by our parent organisation Community Rail Network with a 1st and 3rd place at the Community Rail Awards – more details about the successes are on the following pages.

Two of our Line Officers moved on to roles in education during the year. Catherine Simmons, who was Team Manager as well as Line Officer for the 1066 and Marshlink lines, returned to teaching. Teena Lashmore, our first Windsor-Reading Line Officer, accepted a post as a

lecturer in community policing. We were sorry to see them leave SCRP and wish them all the best in their new roles.

In their place, we have recruited Andy Pope as Senior Line Officer and he will also be looking after the 1066 Line, Sara Grisewood for Marshlink and Sandy Mahon for Windsor-Reading.

Our education team continue to lead the way in providing workshops and travel training under the ‘Go Learn’ and ‘Go Train’ banners. We have expanded the team with Sharon Hunt becoming a Community Rail

Education Officer after completing her project as an Active Travel support officer.

The rail industry still faces challenges with overall passenger numbers below pre-Covid levels. New trends are emerging and there is a growing demand for leisure travel. We will continue to promote train travel as a sustainable form of transport and demonstrate the social value we bring to the community through our work.

We would like to thank all our community groups, volunteers, partners and stakeholders for their continued support.

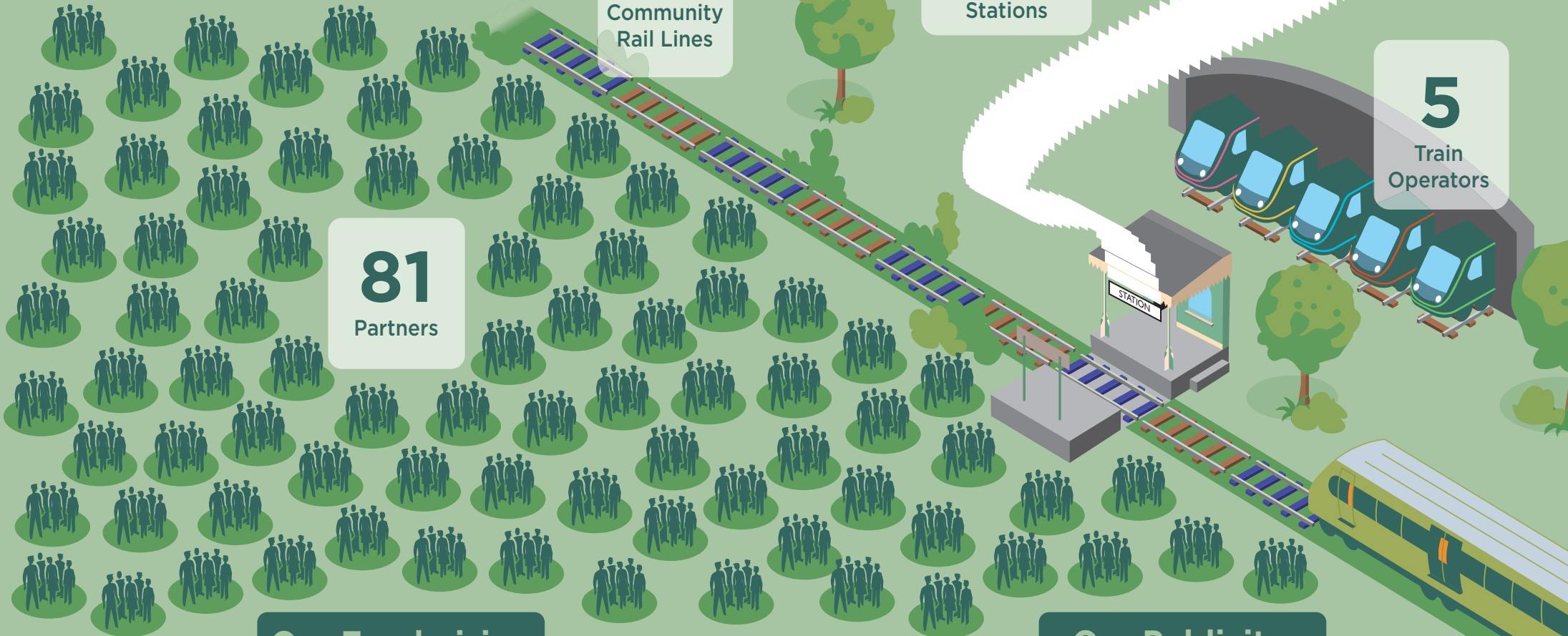


Cover image: Launch of Try a Train project at Maidenhead with GWR and Optalis supported employment service. Photo: Mike Swift

← SCRP staff and directors at Haywards Heath Town Council offices September 2022. Photo: Kevin Boorman

THE YEAR IN NUMBERS

Our work



Our Fundraising

£195k

Grants to station partners and SCRP-wide projects

£26k

Donations to station partners and SCRP-wide projects

Our Publicity



1,559

Social media followers



421

Social media posts



146

Website stories

Awards Success

We were successful once again at the annual Community Rail Awards with recognition for the work we have done, particularly in publicity and promotion.

We won 1st place in the Most Effective Communications Campaign award for the Go Green by Train CO2 savings graphics used during Community Rail Week 2021 in the run-up to the COP26 climate change conference.

The judges said: “We were really impressed by this project. Communications in community rail is about influencing behaviours and should be a two-way process. The winning project demonstrates all of this and more!”

The award citation noted: “By promoting the sustainable transport message via authentic and relevant ‘on-brand’ posts, they wanted to ensure they ‘stood out from the crowd.’ SCRP decided to target their campaign at a youth audience, engaging young people in ways relevant to their generation. They did this by relating the CO2 savings made



↑ *Most Effective Communications Campaign award trophy and certificate*

by travelling by train to the power used to charge mobile phones.

“The campaign produced excellent engagement figures, reaching well beyond the partnership’s followers and core audience. There was a very positive reaction on Twitter and Instagram, and promotion by key partners, supporters, and volunteers also helped to promote the message on Facebook and the partnership website. SCRP now have a set of graphics they can adapt and use for future campaigns, offering a shelf life beyond the initial concentrated publicity burst.”

Line Officers Paul Bromley and David Daniels collected the award on behalf of the entire SCRP team.



↑ *SCRP Line Officers Paul Bromley (second left) and David Daniels (centre) collect the Most Effective Communications Campaign award from CRN Chief Executive Jools Townsend (left), Transport for Greater Manchester Head of Rail Simon Elliott (second right) and Northern Managing Director Nick Donovan (right)*

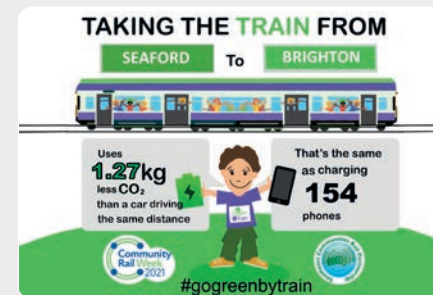


↑ *Photo competition entry ‘A Royal Tour of the 1066 Line - What will they think of next!’*

In addition, a photo of 1066 Line Officer Catherine Simmons with a giant knitted Queen took 3rd place in the photo competition.

The picture – entitled ‘A Royal Tour of the 1066 Line - What will they think of next!’ – was taken during the Platinum Jubilee celebrations in June by Matt Fraser, Community Relations Manager for Southeastern Railway.

The Community Rail Awards were held at Manchester’s Central Convention Complex on 6 October. More than 430 guests attended, including community rail volunteers, officers, rail industry leaders and government representatives.



↑ *Example of ‘Go Green by Train’ CO2 savings used on social media*



'1066' Line (Hastings to Tonbridge)

Andy Pope, Line Officer

Introducing the new Line Officer. I have lived in Battle and St Leonards all my life and have built close ties with both the youth and business communities. I am a trustee for the Scouts and a director of the Let's Do Business group. My hobbies include being outside with the Duke of Edinburgh's Award scheme. I am a keen rugby fan ... and a poor golfer!

Having spent 30-plus years in corporate banking, I am now really looking forward to a new community-focused role close to home.

My predecessor Catherine Simmons put together numerous events during the year and one of the highlights was working with Battle Yarn Bombers who produced



numerous knitted works of art to celebrate the Queen's Platinum Jubilee. These included Her Royal Knittedness who toured the line with her knitted corgis.

A pop-up history banner was produced for the ticket office at High Brooms station in response to a request from a local councillor and a local resident. The history of the line was also reflected in the unveiling of plaques at Grade II listed Battle station to mark the restoration of the roof and chimney which won a National Railway Heritage Award for craft skills.

A very rewarding Try a Train trip took members of HOPE-G (Hastings Older Persons Ethnic Group) from Hastings to Tunbridge Wells alongside SER Community Relations Manager Matt Fraser. Five of the nine members of the group had not travelled by train since the pandemic so this was a great opportunity to Try a Train in a supported way with friends.

← Members of Hastings Older Persons Ethnic Group prepare for their Try a Train trip with Southeastern Railway's Community Relations Manager Matt Fraser



← Official unveiling of blue plaques marking the success in the National Railway Heritage Awards for the restoration of Battle station



↑ Elizabeth-Rose, Evelyn Lee and Annabelle meet Her Knittedness at Battle. Photo: Andy Jones SER



↑ Pop-up history banner at High Brooms with resident Barry Crick (left) and Southborough town councillor Alan Bullion (right)



Arun Valley Line

Rowena Tyler, Line Officer

The Arun Valley Line welcomed two new station partners during 2022. The QE2 SEN School adopted Horsham station and Chichester Rotary adopted Chichester station. They both got involved straight away, contributing to the SCRP-led initiative 'Community Rail congratulates Her Majesty'.

This was a truly collaborative project. Contributors and participants included:

7 schools

9 community groups

5 local councils

3 station businesses (possibly more)

1 centre for adults with learning difficulties

Plus Southern Railway's West Coast Area management and maintenance teams, station staff, individuals and SCRP colleagues. Funding was secured from the Arts Council via Sussex Community Foundation.

Throughout 2022, partnership working was the name of the game. Clients from the Aldingbourne Trust helped to distribute and install posters. One of these was a large one promoting the WildArt Trail, designed and funded by Horsham District Council, and installed into a Network Rail frame, donated by Bam Nuttall contractors.

Another group of Aldingbourne Trust clients, who are not so confident about travelling independently by rail, were treated to a train ride on the Arun Valley Line, accompanied by SCRP Line Officer Rowena Tyler, Station Manager Jamie Duffy, and two GTR on-board crew Debbie and Jane. They enjoyed the train ride immensely and one high spot was a visit to the Engine Shed at Ford.

Network Rail volunteers came to Arundel for a day of vegetation clearing and strimming, leaving the grassed area on the approach to the station looking much more welcoming.



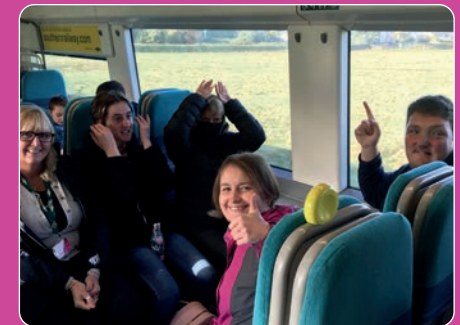
↑ QE2 SEN School at Horsham station to help with Platinum Jubilee celebrations



↑ Network Rail volunteers clearing vegetation



↑ James Fallick from GTR maintenance with Dick Hammond from Chichester Rotary



↑ Aldingbourne Trust clients on the train



↑ Aldingbourne Trust clients help Line Officer Rowena Tyler at Pulborough



↑ Special Platinum Jubilee poster at Gatwick Airport



↑ Visit to the Engine Shed at Ford by Aldingbourne Trust members



Uckfield & East Grinstead to Oxted Lines

Sharon Gray, Line Officer

My area was the lucky recipient of not one, not two, but three Access for All Awards. These were at Eridge, Crowborough and East Grinstead stations.

It was fascinating to watch these very complex projects from the start through to the final completion of the installations. Network Rail and Bam Nuttall were very keen to engage with our steering groups and local communities throughout the process and went above and beyond what was expected of them. I was very lucky to be asked to play a small role in helping to organise the celebration

events at both Eridge and East Grinstead where the emphasis was on engaging with the local community.

The celebration at Crowborough followed in early in 2023 which will hopefully enable the new Community Hub to join in and play a part in the event.

One of the more unusual sights at Eridge was a cow who had wandered onto the tracks of the Spa Valley Railway. Fortunately, there were no Spa Valley trains running that day. Volunteers from the railway bravely rescued the cow and the story had a happy ending - she was safely returned to her relieved owner!



← Buxted blooms - one of the many wonderful station gardening displays



↑ East Grinstead Access for All scheme lift opening: (left to right) Mid Sussex MP Mims Davies, Anne Mackie (the widow of East Grinstead campaigner Eric Mackie), then Network Rail Southern region managing director John Halsall, Mayor of East Grinstead Cllr Adam Peacock and customer services director at Southern Chris Fowler. Photo credit: Network Rail



↑ The then rail minister Wendy Morton MP and Wealden MP Nusrat Ghani try out the new lifts at Eridge station in February 2022



→ Spa Valley Railway volunteer Stuart Pay helps to rescue the cow which had wandered onto the tracks



Marshlink Line

Sara Grisewood, Line Officer

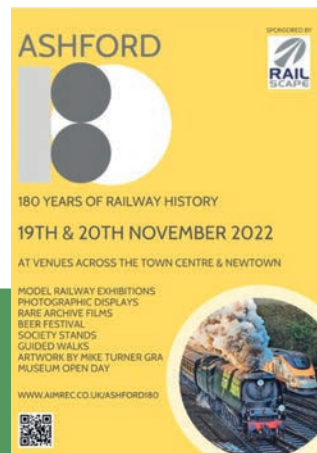
I am enjoying my new role on the Marshlink Line. A while ago it was voted one of the top ten scenic rail routes in the country and I am discovering how stunning it is.

I am an artist with a particular interest in the wildflowers growing by railway lines. My journey from Lewes (where I live) to Rye is an ideal journey with wonderful views of the Downs, the Sea and then the Marsh. The potential is huge - encouraging the use of train travel on this green line which flourishes in biodiversity, developing links to the rich artistic heritage all along the Sussex and Kent coast, and, in turn, highlighting the importance of sustainable travel during the climate emergency.

At Rye Station I have cleared out the office ready to use as a community hub with some rail-related drawing workshops starting in the Spring.

I attended the celebrations of 180 years of railway history at Ashford and shared information about Community Rail.

My predecessor Catherine Simmons held a pop-up event at Rye station linked to the Three Little Words project at Rye Harbour Nature Reserve to capture three-word responses from visitors, staff and volunteers to various locations.



→ Ashford event to celebrate 180 years of railway history



↑ Marshlink Line Chair Kevin Boorman, Line Officer Sara Grisewood and Vice Chair Mick Burgess at Rye station. Photo: Harri Boorman



↑ Winchelsea gardener John Spencer with some of the station displays



↑ Three Little Words pop-up event at Rye



North Downs Line

David Daniels, Line Officer

The North Downs Line had a very successful year with projects, particularly art installation.

In February this year the children at Tillingbourne Primary and Chilworth Infants displayed their artistic talents with pictures installed in the waiting shelters at Chilworth Station. Each school received a donation of £100 to be used for other school projects.

In late 2020 the Network Rail Stakeholder Manager for Wessex, Rob Hodgkinson, approached Southeast CRP with an idea for the creation of a mural to be sited at Guildford. A project team was formed consisting of Network Rail, SCRP, SWR, GWR, Guildford Arts,

Arts Society Guildford and The Arts Society. We engaged a local designer/artist, Julie Hoyle, found some grant funding - including from GWR and CrossCountry - and set her to deliver a 10 x 1.5m mural. It was officially unveiled in April 2022 by Lucy McAuliffe, Head of Stations for Network Rail, in the presence of the Mayor of Guildford and other dignitaries and representatives.

We supported a number of initiatives at Farnborough North as Reg's Garden went from strength to strength with the allotments now being fully occupied. In the very near future Farnborough Street Residents Association hopes to lease the old Station Master's House with a view to refurbishing it ready for community use.



↑ Mural at Guildford produced by a range of partners and artists. The work of designer/artist Julie Hoyle at Guildford station



↑ Pictures from children at Tillingbourne Primary and Chilworth Infants in the waiting shelters at Chilworth station

Other projects in progress at this time:

- Children's artwork at North Camp in the station shelters, similar to Chilworth.
- A station garden at North Camp adjacent to platform 2 and The Old Ford will take shape early in 2023 ready for Spring.
- A plaque and explanatory poster at Chilworth to act as a memorial to Henry Wicks and describing why Jessie's Seat came into being.

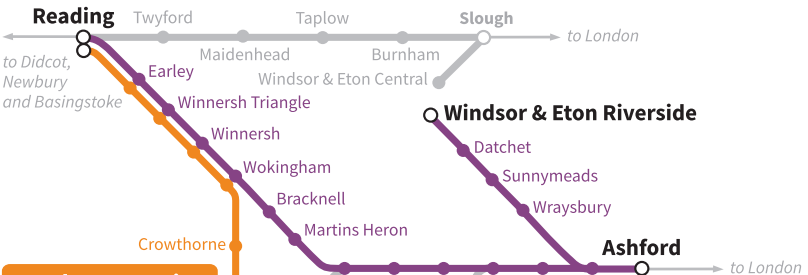


↑ Progress at Reg's Garden at Farnborough North

↓ Jessie's Seat train headboard



Windsor to Reading Line



North Downs Line



southeastcrp.org





Sussex Coast Line

Rowena Tyler, Line Officer

Volunteers and partners worked hard to enhance stations along the line. Much line officer time goes into liaising between them, GTR, Network Rail and others to achieve the aims set out in the Line Action Plan, which is planned and agreed with the Steering Group. Thanks must go to the West Coast Area management team and the local maintenance team who are always responsive and happy to advise and assist.

Angmering gardens feature eco-borders, made from bottles, pallet 'trees' which are used as signboards to promote upcoming initiatives, wildflower insect habitats. The gardens are presided over by 'Gladys' who was installed as part of the silhouette trail in 2018, commemorating the centenary of the First World War and the Women's Suffrage movement. Local schools help with making birdboxes and bug hotels, encouraging reuse and

recycling of materials. A vibrant art display in the bookings hall included a tribute to sunflowers in art, a 'design a crown' competition and a guide to insects and wild plants which could be spotted in the station gardens.

Lancing station partners, also keen gardeners and creatives, got into the Platinum Jubilee commemorations in a big way. The bookings hall was decorated with knitted tributes, flags and the stickers provided by SCRP. The gateline area was enlivened with larger window film stickers, congratulating Her Majesty.

SCRP Line Officers assisted GTR and Sustrans with an audit, selecting one station per line, conducting a bi-monthly tally of all cycles parked at that station. Worthing was selected, which has five different



→ Angmering gardeners with Station Manager Jamie Duffy at the tribute to the suffrage movement and those who died in World War I

cycle racks, including one housing the Donkey hire bikes.

Shoreham station partners brought the station into the community, as part of the Heritage Open Days initiative. A 'guess the gadget' trail was set up across Shoreham. At the station, participants were shown a picture of a gadget – it was a whistle, which was produced during the time of Covid, as staff were not allowed to share the mouth whistles, as they had done traditionally.

Portslade station partners, the Downsview Life Skills college, have been very busy, installing and planting raised beds for the platforms, working with station staff. Their next project will be a book swap at the station.

Southwick station received some beautiful maritime heritage photographs which GTR maintenance installed in the summer of 2022 into the underpass. These were donated by Shoreham Port, who had been given them by Brighton photography group 'The Tides' with a request to find a good local area for them to be permanently on show. Some others from the collection were installed in the waiting room at Shoreham.



↑ Window film stickers congratulating Her Majesty Queen Elizabeth II with Line Officer Rowena Tyler (left) and Wendy Peters from the 'Keep Lancing Lovely' station partner



↑ Maritime heritage photographs at Southwick station



↑ Artwork at Goring-by-Sea station produced by children at Goring Primary school. Keri Heffernan, one of the teachers, instigated the adoption of the station



Sussex Downs Line

Paul Bromley, Line Officer

A new name, a new Line Chair and newly opened station buildings – that sums up 2022 for our route.

Members of the Steering Group provided a shortlist of names to reflect the communities from Seaford to Brighton. They then voted for ‘Sussex Downs Line’ and that’s how we’re now known.

Former Lewes MP and ex-rail minister Norman Baker was elected as Line Chair and he has been very active: meeting community groups and volunteers, raising issues with rail representatives and steering the meetings to ensure we continue to connect communities to their railways.

The year has also seen the completion of some longstanding projects with the first phase of Bishopstone station’s revival finished. The official opening of the community hub in the old parcels office was marked with a lavish ceremony organised by the Friends of Bishopstone Station and attended by the Lord-Lieutenant of East Sussex and railway historian/TV presenter Tim Dunn.

We have continued to bring under-represented groups to the railways for organised ‘Try a Train’ trips including people strengthening their English skills and those without access to digital and online services.



← Official opening of Bishopstone community hub by Andrew Blackman, Lord-Lieutenant of East Sussex, watched by (right) Barbara Mine, chair of Friends of Bishopstone Station, and other members of FOBS



← Exhibition at Brighton Toy and Model Museum to mark 50 years since the last running of the Brighton Belle service. Left to right: Line Officer Paul Bromley, Line Chair Norman Baker, Museum trustee Vic Michel, Museum founder Chris Littledale, Danielle Lade and her father Nick Lade from the Pullman Association



↑ Try a Train participant Pauline Cherry at Seaford station during Community Rail Week urging others to ‘Give the Train a Try’



↑ Mary Sautter, lead volunteer with Lewes Pots and Plants, shows Line Chair Norman Baker the extent of her team’s work at Lewes station



↑ Members of Diversity Resource International’s strengthening English skills group prepare to set off from Seaford on their Try a Train trip to Lewes

← Sussex Downs Line Chair Norman Baker and Southeast Communities Rail Partnership chair Tim Barkley unveil the new name for the Seaford to Brighton route



Tonbridge, Redhill & Reigate Line

Sharon Gray, Line Officer

Tonbridge station's platform 3 waiting room was given a makeover by the installation of a fabulous wall art display.

This was made possible with support from Tonbridge & Malling Borough Council, with the artwork very kindly donated by Absolute Creative and original artwork from Debbie Draws Maps.

In September, a total of 55 Year 6 children from Edenbridge Primary

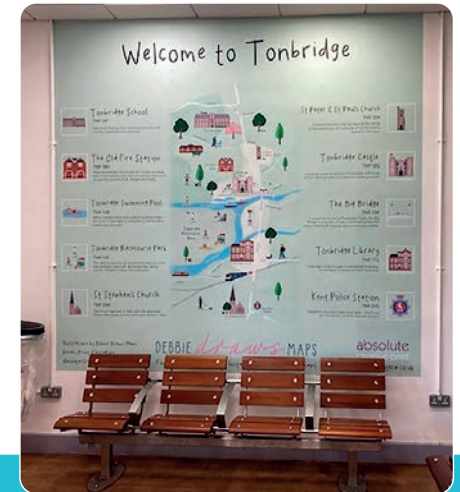
School joined us for a multi-agency safety event. They visited Edenbridge Town station for a familiarisation talk from Southern's Rail Enforcement Officers and our Education Officer Maddy Mills. Then it was on to the local Fire Station and, on returning to school, there was a further talk from Kent Police Youth Officer. A great day was had by all.

I am still working with Southeastern Railway on trying to find a solution

to the problem of saving the mural in the underpass at this station which has sustained damage due to water ingress.

I produced window stickers for all our stations to mark the Queen's Platinum Jubilee in June with a special message from Community Rail.

↓ Wall art display in the waiting room at Tonbridge

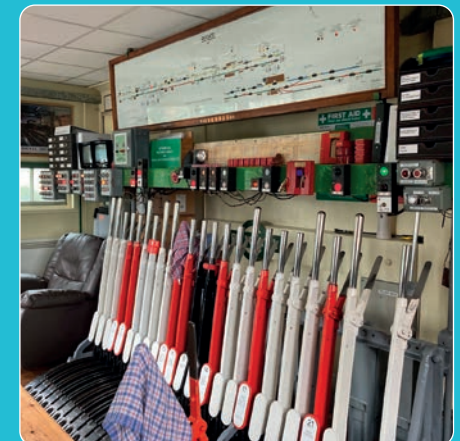


← Edenbridge child safety event. Left to right: SCRPEducation Officer Maddy Mills, Rail Enforcement Officers Nicholas Turner and Annika Daley, Inderjeet Kaur from GTR and GTR station manager Donna Anderson

↓ The special window stickers as Community Rail congratulated Her Majesty Queen Elizabeth II on her Platinum Jubilee



↓ The view inside the signal box at Reigate





Windsor to Reading Line

Sandy Mahon, Line Officer

Since joining the team in September, I have been delighted to attend events that showcase the fantastic partnerships between Southeast Communities Rail Partnership and social care organisations.

Working with Optalis Supported Employment Service and GWR, a new project for 2022 was 'Try a Train' which encourages and assists people with disabilities and additional needs to navigate and build confidence when travelling by rail. Representatives from Community Lives were on hand for the launch at Maidenhead station. Optalis Ability Travel team served delicious food treats which they had prepared and a collaborative artwork was unveiled to much admiration. Maidenhead MP and former prime minister Theresa May turned up to support the event.

Another enjoyable day was celebrating the adoption of Wokingham railway station and the launch of an Easy Read Station Guide. This was a partnership event between Optalis, CLASP (Caring Listening and Supporting Partnership), the Wokingham Learning Disability Partnership Board and South Western Railway. It highlighted the barriers some members of our communities have to train travel.

CLASP worked with SCRIP and SWR to produce an easy read, accessible station and train guide to help people with disabilities plan their travels safely, confidently and independently. We were treated to a wonderful and enthusiastic performance by CLASP



→ Maidenhead MP Theresa May with Southeast Communities Rail Partnership CEO Fiona Morton and Optalis chief executive David Birch. Photo: Mike Swift



↑ CLASP Community Choir at Wokingham station. Photo: Alex Hood, Optalis Digital Communications Manager

↓ Platinum Jubilee floor vinyl at Reading station

Community Choir with smiles and applause from passing pedestrians and station visitors.

For the Queen's Platinum Jubilee, a floor vinyl was put in place at Reading station with the words used by the then Princess Elizabeth on her 21st birthday vowing to devote her whole life to the service of the nation.





Go Train – education service on the North Downs Line

Maddy Mills, Education Officer

Go Train is now in its second year on the North Downs Line, and we have expanded the team which now includes Sharon Hunt. The Go Train programme for Year 6 pupils and the Try a Train programme for older young people continue to grow. We are now extending the age groups we work with and targeting community groups.

Cath Reed and I travelled up to Leeds to meet with Community Rail Lancashire and attended the first face-to-face Community Rail

↓ First face-to-face meeting in the South of England for the Community Rail Education Network



Education Network meeting after the pandemic. We learned lots from the experience and in November I hosted the first face-to-face meeting in the south. Our next meeting is a field trip to the Greenford Line where VivaRail will give us a tour of their new battery powered train.

The Treasure Hunt was launched over Easter 2022 and ran again over the summer holidays. The Alice in Wonderland themed quiz was downloaded more than 1,200 times from our website. We were so impressed with this demand that we are now working with app developers 'Really Quite Something' to build an app-based version of our Treasure Hunt to launch over the Easter holidays in 2023.

Figures for 2022 (pupil numbers)

Go Train Year 6 workshops	1,154
Go Train Year 6 station visits	291
Try a Train workshops	166
Try a Train trips	173



← Go Train in action at Reading station with Year 6 pupils

↓ Treasure Hunt participants at Guildford train station



← Discovery Session with app developers
L-R Education Officer Maddy Mills, app developer Toby Uffindell-Phillips, Education Officer Sharon Hunt, Education Officer Cath Reed, app developer Kevin Gillard



Go Learn - education service for GTR

Cath Reed, Education Officer

As one of the education team working alongside Maddy Mills and Sharon Hunt, I run a series of workshops throughout Sussex on behalf of GTR. These workshops, which include, Planning a Journey and Sustainable Travel are proving very popular.

A highlight of the workshops is a station visit and ride on a train, where students can put their new found knowledge into practice. We work in conjunction with railway staff to provide a valuable learning experience.

Sharon and I were lucky to have a visit to Three Bridges Rail Operating Centre. Learning how this operates has enabled me to inform the pupils when delivering the safety workshops.

In September I was delighted to attend the Junior Citizen event at the Hawth in Crawley. This was run by Crawley Borough Council for more than 1,600 Year 6 pupils from the town. Junior Citizen gives children advice on how to deal safely with potential dangers in various scenarios.

Along with Sharon Hunt we also visited the Bluebell Railway to see one of their evacuation days in action and I have now included a talk with an evacuee in some of my station visits.



← Far left: Education Officers Sharon Hunt (centre) and Cath Reed (right) on a visit to The Bluebell Railway

← Education Officers Sharon Hunt and Cath Reed visiting the Three Bridges Rail Operating Centre



← Rail Safety lessons during the Junior Citizen event in Crawley

↓ Using the Help Point with pupils from Balfour Junior School Brighton on a station visit



↓ Children from West Park School in Worthing dressed as evacuees on a station visit



↓ Work produced by Students from St Paul's school in Brighton after a Sustainable Travel workshop





Education

Sharon Hunt, Education Officer

In January 2022 I joined SCRIP to work on 'Your Active Journey' project with East Sussex County Council, Sustrans and Living Streets. I delivered a series of bespoke workshops which covered planning a journey, rail safety and sustainable and healthy travel.

I particularly targeted pupils in Bexhill, Eastbourne and Hastings – many with Special Education Needs. I ensured the programme was accessible for less experienced travellers and those who had previously travelled by train with an adult but expressed anxieties and concerns about independent train travel.

These young people were able to experience supported rail travel and

station visits to help them develop confidence and independence whilst travelling. One Further Education teacher described the travel training and Try a Train experience as “potentially life changing for our learners.” Another concluded that: “this will really help our students travelling to college next term.”

In six months, my target to engage five schools and 40 participants was exceeded. A total of 167 students from seven schools and colleges participated and benefited from our travel training.

I am now working on the North Downs Line (GWR), providing education to schools and community groups in the area. I am also creating more resources to support people with learning difficulties.

	Plan a Journey Workshop	Rail Safety Workshop	Sustainable & Active Travel workshop	Careers Workshop	Try a Train including station visit
Number of participants	167	164	147	26	59



↑ The Lindfield School Try a Train and station visit to Eastbourne



↑ Hazel Court FE Try a Train and station visit to Brighton



↑ Hazel Court FE – extended train travel for less confident travellers – to Hastings



↑ Hazel Court FE – extended train travel to London to visit Science Museum

CONTACT DETAILS

For more information on how you, your company or your voluntary group can be involved, contact us via any of the following SCRP staff.

We offer a range of opportunities to get involved with Community Rail. You can volunteer your time to help with a specific project, join our line steering groups, share your skills or persuade your company to spend a day volunteering with us.

Chief Executive

Fiona Morton 07891 556897
fiona@southeastcrp.org

Deputy Chief Executive, Fundraising & Finance Officer

Trevor Field 07495 046462
trevor@southeastcrp.org

Senior Line Officer & 1066 Line

Andy Pope 07950 937934
andy@southeastcrp.org

Arun Valley Line and Sussex Coast Line

Rowena Tyler 07944 289269
rowena@southeastcrp.org

Marshlink Line

Sara Grisewood 07375 531987
sara@southeastcrp.org

North Downs Line

David Daniels 07939 036131
david@southeastcrp.org

From 3 April 2023

Caroline Salmon 07939 036131
caroline@southeastcrp.org

Sussex Downs Line

Paul Bromley 07949 314233
paul@southeastcrp.org

Uckfield- East Grinstead - Oxted and Tonbridge to Reigate Lines

Sharon Gray 07944 628933
sharon@southeastcrp.org

Windsor to Reading Line

Sandy Mahon 07399 026885
sandy@southeastcrp.org

Education Officer GWR

Maddy Mills 07852 221274
maddy@southeastcrp.org

Education Officer GTR

Cath Reed 07535 511718
cathreed@southeastcrp.org

Education Officer GWR

Sharon Hunt 07944 326430
sharonh@southeastcrp.org

The Members of our Stakeholder Advisory Board



Kent County Council

Surrey County Council

West Sussex County Council

East Sussex County Council

Brighton and Hove City Council

Hastings Borough Council

Crawley Borough Council

Brighton and Hove Buses and Metrobus

Railfuture

London Gatwick Airport

South Downs National Park

Surrey Hills AONB



→ Children from Hazel Court Further Education school on a Try a Train trip to the Science Museum in London



Southeast Communities Rail Partnership, Lewes Station,
Platform 5, Station Road, Lewes, East Sussex BN7 2UP

www.southeastcrp.org

 www.facebook.com/SCRPCIC

 www.instagram.com/southeastcrp

 twitter.com/SoutheastCRP

 www.linkedin.com/company/southeast-communities-rail-partnership

Photography: SCRCP staff and volunteers,
Network Rail, Mike Swift, Alex Hood,
Harri Boorman, Kevin Boorman, Andy Jones

