



District Plan Review

Town and Parish Councils
December 2022

1

District Plan Review

- District Plan 2014 - 2031 was adopted in 2018
- Legal requirement to review and update every 5 years
- Important to maintain an up-to-date plan to ensure policies have full weight
- Review process started in 2021
- **Draft District Plan 2021 – 2039 published for consultation**

Mid Sussex District Plan
2021 - 2039
Consultation Draft (Regulation 18)
MID SUSSEX
DISTRICT COUNCIL
November 2022

2

Vision and Objectives



“A thriving, attractive and resilient District, which is a highly sustainable and desirable place to live, work and visit. Our aim is to maintain, and where possible, improve the social, economic and environmental well-being of our District and the quality of life for all, now and in the future.”



3

Draft Revised District Plan Strategy



4

Policies



Sustainability
Natural Environment and Green Infrastructure
Countryside
Built Environment
Transport
Economy
Sustainable Communities
Housing
Infrastructure

New and Amended Policies On:

- Climate change, carbon neutrality and sustainability standards
- Biodiversity Net Gain
- Active Travel, Electric Vehicles
- Town, Village and Neighbourhood Centre development
- Housing Mix, First Homes and Older Persons Accommodation

5

Housing Need and Supply



- Housing Need (Standard Method) = 1,119 dwellings per annum

Housing Need	20,142
Housing Already Planned For	11,973
Residual Housing Need	8,169

- District Plan Review – Supply:

District Plan Review Allocations	6,757
Windfall Allowance	1,714
Total Plan Supply	8,471
Total under/over supply:	+302

6

Housing Supply



- 3 “Sustainable Communities”
- 21 smaller allocations across the district
- 20-minute Neighbourhood forms part of the strategy
- **Total supply: 8,471 (+302)**



DPSC1: Land to the west of Burgess Hill
 Total Yield: 1,400
 No. of homes within Plan period (2039): 1,400



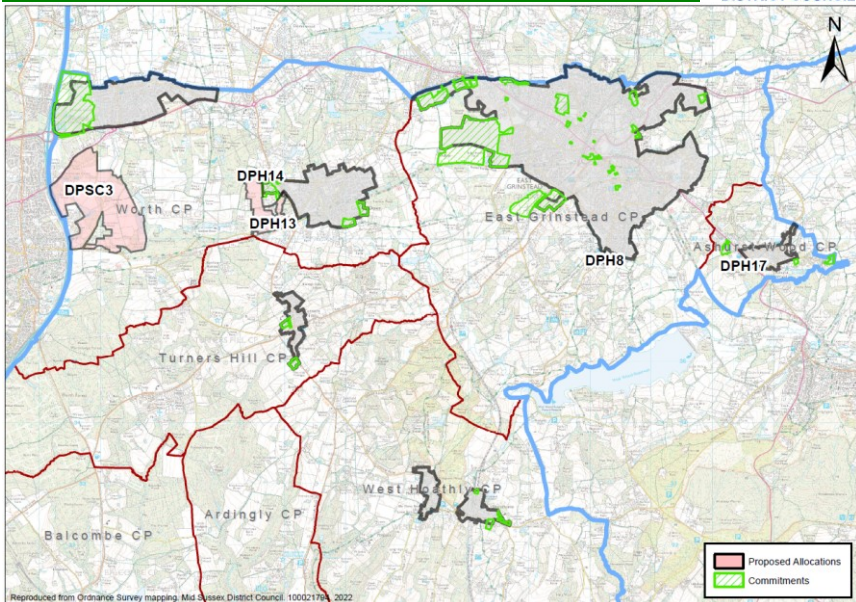
DPSC2: Land to the south of Reeds Lane, Sayers Common
 Total Yield: 2,000
 No. of homes within Plan period (2039): 1,850



DPSC3: Land at Crabbet Park, Copthorne
 Total Yield: 2,300
 No. of homes within Plan period (2039): 1,500

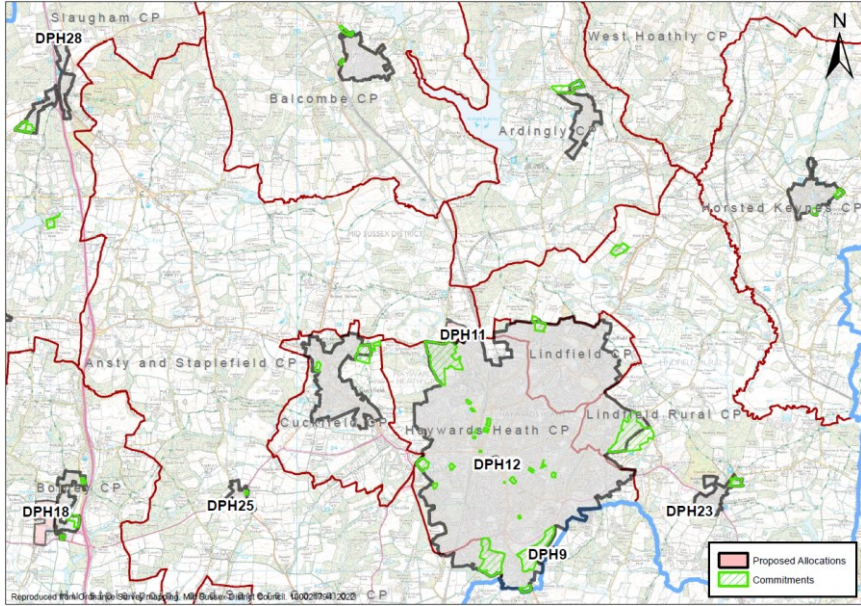
7

Housing Supply: Distribution



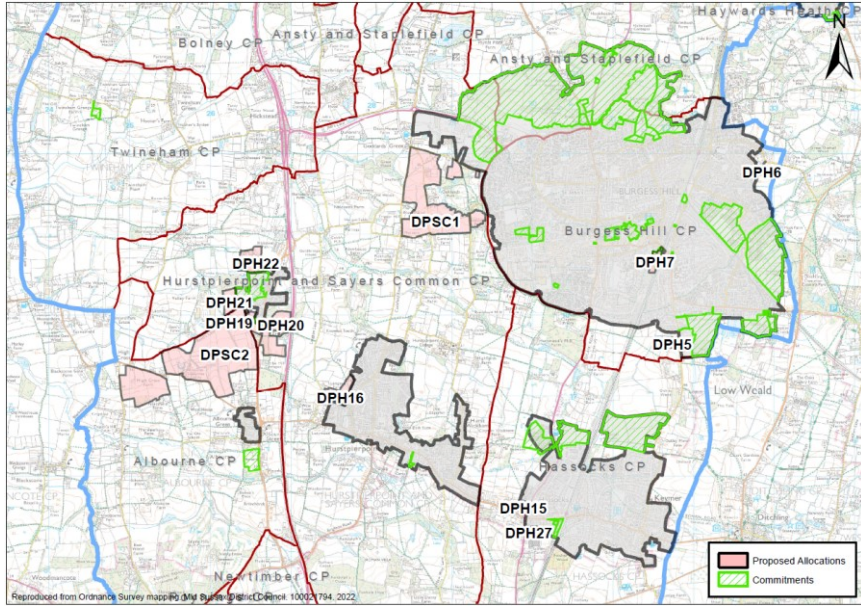
8

Housing Supply: Distribution



9

Housing Supply: Distribution



10

Consultation and Next Steps



- Consultation documents and full evidence library available online at www.midsussex.gov.uk/districtplan
- Responses can be submitted using the consultation hub, email or post
- **Closing Date: 19th December**

- **Regulation 19:** Summer 2023
- **Submission:** December 2023
- **Examination:** February 2024 onwards
- **Adoption:** Summer 2024

Report to Parish, Town and District Comms group meeting 8th December 2022

Paul Collard - Resilience & Emergencies Manager

Please accept my apologies for not attending the meeting in person due to a scheduled appointment following my recent absence.

I'm please to say that I'm now back to work and feeling much better.

I thought the following may be of interest –

Water Companies

The Sussex Resilience Forum has been approached by the Water Companies serving Sussex appealing for qualifying vulnerable customers to join their Priority Services Register.

Details are –

[South East Water Priority Services Register](#) or call 0333 000 2468

[Southern Water Priority Services Register](#) or call 0800 027 0800, **application leaflet attached (joint), application form SW only attached, information poster attached.**



SW_PriorityServicesR SW PSR Poster.docx
egister_A5.pdf



[Portsmouth Water Priority Services Register](#) or call 023 92499666 and **application leaflet attached (joint).**



Joint SW SSEN PW
PSR leaflet.pdf

[SES Water Priority Services Register](#) or call 01737 772 000, information leaflet attached.



SES Water Leaflet.pdf

[UKPN Priority Services Register](#) or call 0800 169 9970, **application leaflet attached.**



UKPN PSR leaflet.pdf

[SGN Priority Services Register](#) or call 0800 975 1818, email customer@sgn.co.uk

[SSEN Priority Services Register](#) or call 0800 294 3259

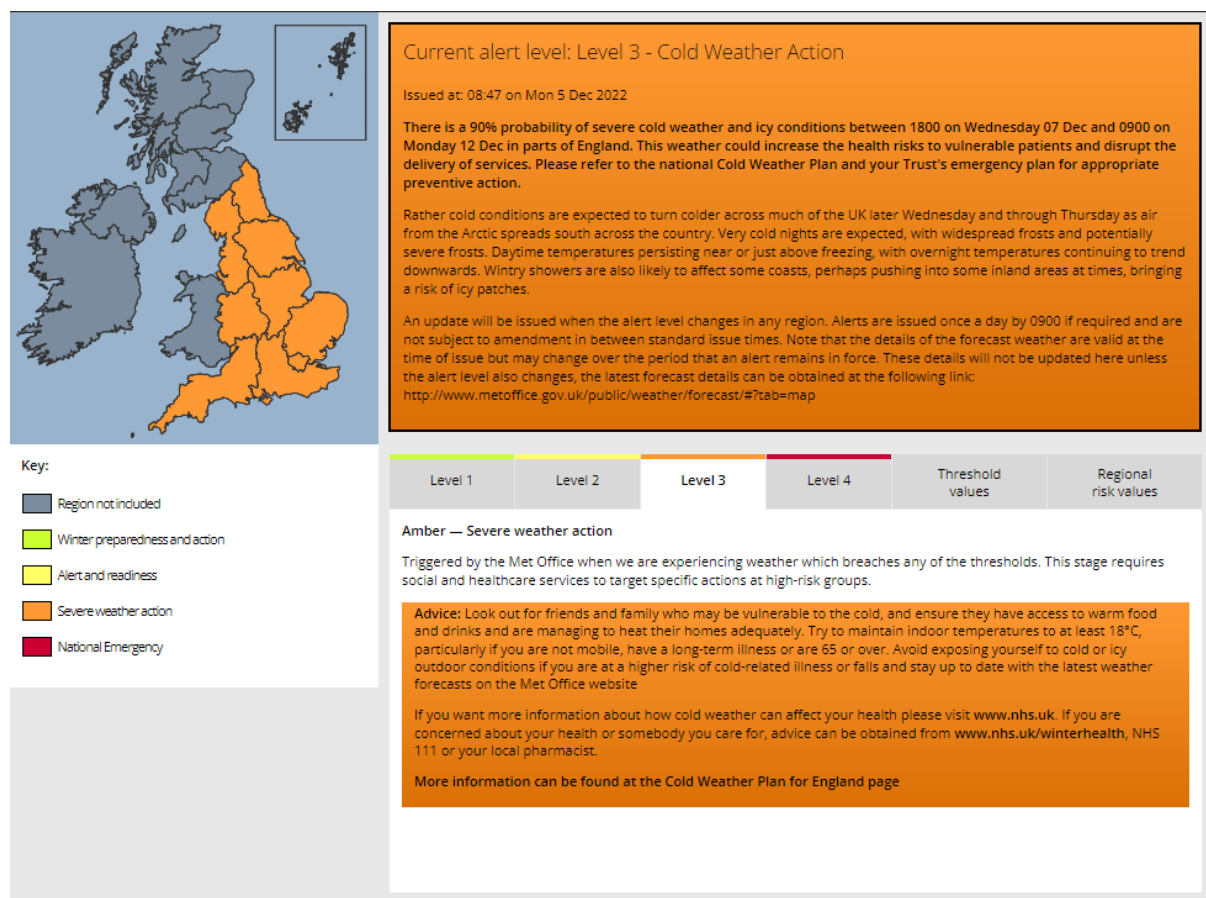
CCTV

Installations at Mount Noddy and Lower East Court are still outstanding however BT, and the contractors are attending both site on Friday 9th December to finalise the plan for the installation of the fibre cable. One I know the installation date I will let you know.

Winter Preparedness

SRF Weather ask us to be aware of [WeatherReady - Met Office](#) which includes lots of helpful information.

Please be aware of the [Level 3 Amber Cold Weather Alert](#)



Current alert level: Level 3 - Cold Weather Action

Issued at: 08:47 on Mon 5 Dec 2022

There is a 90% probability of severe cold weather and icy conditions between 1800 on Wednesday 07 Dec and 0900 on Monday 12 Dec in parts of England. This weather could increase the health risks to vulnerable patients and disrupt the delivery of services. Please refer to the national Cold Weather Plan and your Trust's emergency plan for appropriate preventive action.

Rather cold conditions are expected to turn colder across much of the UK later Wednesday and through Thursday as air from the Arctic spreads south across the country. Very cold nights are expected, with widespread frosts and potentially severe frosts. Daytime temperatures persisting near or just above freezing, with overnight temperatures continuing to trend downwards. Wintry showers are also likely to affect some coasts, perhaps pushing into some inland areas at times, bringing a risk of icy patches.

An update will be issued when the alert level changes in any region. Alerts are issued once a day by 0900 if required and are not subject to amendment in between standard issue times. Note that the details of the forecast weather are valid at the time of issue but may change over the period that an alert remains in force. These details will not be updated here unless the alert level also changes, the latest forecast details can be obtained at the following link:
<http://www.metoffice.gov.uk/public/weather/forecast/#?tab=map>

Key:

- Region not included
- Winter preparedness and action
- Alert and readiness
- Severe weather action
- National Emergency

Level 1	Level 2	Level 3	Level 4	Threshold values	Regional risk values
---------	---------	---------	---------	------------------	----------------------

Amber — Severe weather action

Triggered by the Met Office when we are experiencing weather which breaches any of the thresholds. This stage requires social and healthcare services to target specific actions at high-risk groups.

Advice: Look out for friends and family who may be vulnerable to the cold, and ensure they have access to warm food and drinks and are managing to heat their homes adequately. Try to maintain indoor temperatures to at least 18°C, particularly if you are not mobile, have a long-term illness or are 65 or over. Avoid exposing yourself to cold or icy outdoor conditions if you are at a higher risk of cold-related illness or falls and stay up to date with the latest weather forecasts on the Met Office website

If you want more information about how cold weather can affect your health please visit www.nhs.uk. If you are concerned about your health or somebody you care for, advice can be obtained from www.nhs.uk/winterhealth, NHS 111 or your local pharmacist.

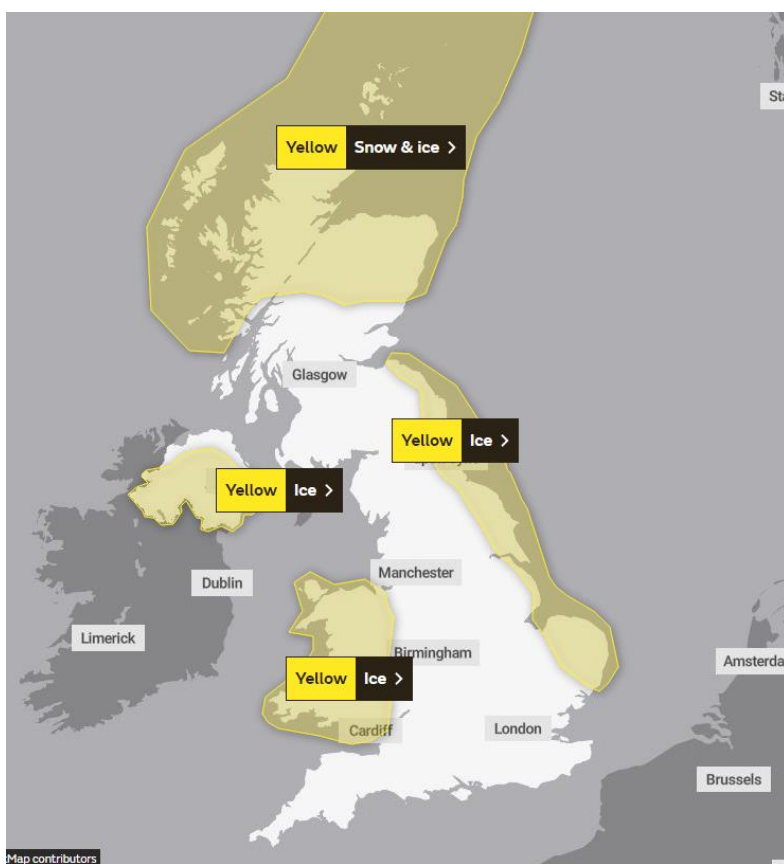
More information can be found at the [Cold Weather Plan for England page](#)

While this doesn't attract a county response the NHS have plans in place to treat the increased number of patients. Local communities are encouraged to implement any plans they have in place to contact their vulnerable residents as well as any good neighbour schemes they may have.

[The cold weather plan for England 2022 to 2023 \(publishing.service.gov.uk\)](http://publishing.service.gov.uk)

Weather

While not for Sussex parts of the UK are under a yellow weather warning for Ice and snow until Thursday evening.



Despite what the Daily Express may be reporting snow Armageddon is not forecast yet!

Outlook for Thursday to Saturday:

Very cold, especially overnight with widespread frosts. Often sunny, however daytime temperatures remaining low. Remaining dry for most, but any isolated showers brings a risk of icy patches, especially Saturday.

Saturday 10 Dec - Monday 19 Dec

Cold weather is expected to continue through at least the first part of this period, with widespread and locally severe overnight frosts. Many coastal regions will see periods of wintry showers, with snow most likely on high ground but perhaps also to lower levels at times in these areas. Inland areas, by contrast, should see more in the way of fine and dry weather with the potential for some crisp, sunny days, although more limited spells of rain, sleet or snow cannot be ruled out. As time goes on, there is an increasing chance of milder air spreading from the southwest bringing longer periods of rain, with the potential for more widespread snow for a time on its leading edge, **but low confidence as to when this might occur**

Warm Spaces & Cost of Living

Please find details here [A Welcome to Warm Spaces in Mid Sussex | Mims Davies](#) of Warm Spaces in Mid Sussex as well as links to further government advice including cost of living support

For more details visit

<https://www.warmwelcome.uk/> and <https://warmspaces.org>

To find out what Government support packages are available visit:

<https://www.gov.uk/government/publications/government-support-for-the-cost-of-living-factsheet/government-support-for-the-cost-of-living-factsheet>

and for information with help with the cost-of-living visit:

www.gov.uk/costoflivingsupport

Mid Sussex also have a dedicated cost of living support section on the website

[Cost of Living Support - Mid Sussex District Council](#)

Please also promote the [MSDC Winter Support Guide 2022 \(midsussex.gov.uk\)](#)



**Thank you and I look forward to seeing you at the next meeting,
Merry Christmas and Happy New Year – Paul.**