



Welcome to East Grinstead



SHOPPING / ATTRACTIONS / HISTORIC HOUSES / LEISURE





KINGSCOTE ESTATE

VINEYARD AND WINERY

Discover East Grinstead's newest tourist attraction, your local Winery and Cellar Door right on your doorstep! One of Sussex's best kept hidden gems is waiting for you to find, and it's only 10 minutes from East Grinstead train station.



Visit our stunning Estate to tour our vines and taste our wonderful English wines. Enjoy delicious lunches every day of the week, or drop in for a cream tea and board games with the kids and try our freshly baked cakes.

For the perfect mid-week indulgence, treat yourself to a delicious glass of wine in a beautiful, cosy Tithe Barn. Keep an eye out for our monthly events, clubs and courses.

Open 10am – 5pm, 7 days a week.
Also available for private event hire.

0134 232 7535

Mill Place Farm, Vowels Lane, East Grinstead, RH194LG



Welcome to East Grinstead



St. Swithun's Church

Welcome to the beautiful medieval market town of East Grinstead. Situated 20 minutes from Gatwick Airport and an hour from both London and the South Coast, it is an ideal base from which to explore the counties of Kent, Surrey and Sussex. With Ashdown Forest, home to **Winnie-the-Pooh** and a wealth of famous houses, gardens, sporting activities, vineyards, fine dining and country hotels nearby, there is truly something for everyone.

Our magnificent **Historic High Street**, a conservation area, is full of timber framed Tudor and Medieval buildings with an interesting mix of independent shops, bars and cafes. The golden sandstone building of **Sackville College**, founded as alms-houses in 1609, is open to the public through the summer. Lyrics to the carol 'Good King Wenceslas' were written here by John Mason Neale. His tomb can be seen within the grounds

of **St Swithun's Church** along with memorial stones to three Protestant **Martyrs**, burnt at the stake in 1556. A memorial plaque to **Pte Sidney Godley** the first non-commissioned recipient of the Victoria Cross 1914 lies at the base of the War Memorial; Flower beds here are re planted annually to commemorate important anniversaries and events of local or national importance and these have become an anticipated attraction. There are fabulous, sometimes highly scented, **floral displays** all year with themed planting from mid-summer.

East Grinstead Museum houses important collections from the **Queen Victoria Hospital** museum including work by plastic surgeon **Sir Archibald McIndoe**. His pioneering procedures at the QVH during WW2, treating badly burned airman,



Sir Archibald McIndoe Statue



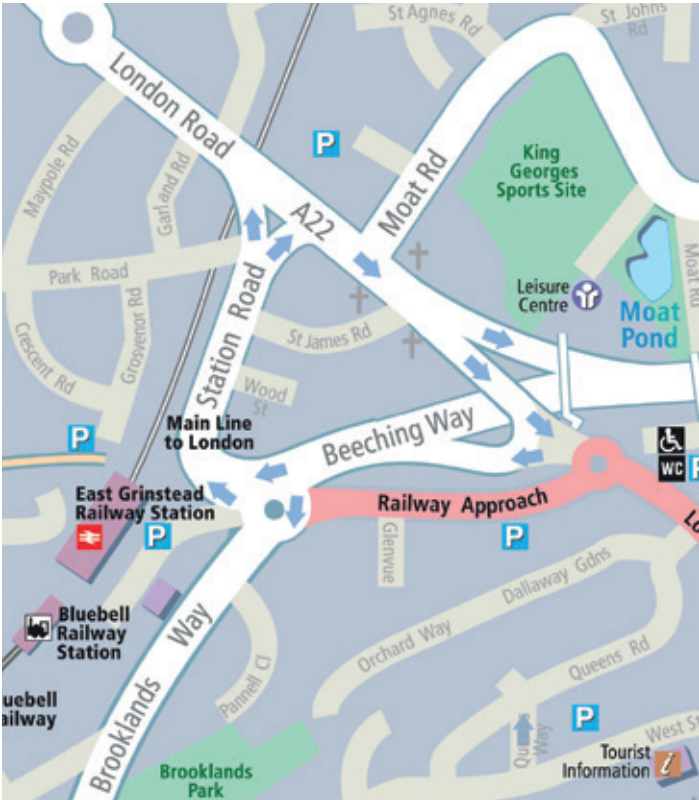
who called themselves the **Guinea Pigs**, afforded him world renown. **Memorial Statue** to Sir Archibald, by Martin Jennings, can be seen in the High Street. Just a short walk away is



East Court Live

Chequer Mead Theatre and Arts Centre with a dynamic program of performances and the parkland grounds of **East Court Mansion** where the **Greenwich Meridian** passes through and is celebrated. You can even receive a certificate to prove your visit to both the Eastern and Western Hemispheres from the Town Council.

The **Bluebell Railway** runs preserved steam trains from East Grinstead to Sheffield Park Station, a return journey covering 20 miles through the beautiful Sussex



© Arka Cartographics 01342 823423



EAST GRINSTEAD TOURIST INFORMATION
A service of East Grinstead Town Council



countryside. It takes about **15 minutes** to walk into the town centre from the Bluebell and mainline stations.

On the outskirts of the town within the **Kingscote Valley** is the National Trust property of **Standen**; an outstanding example of an Arts and Crafts house retaining **William Morris** wallpapers and textiles. This area is rich in history and offers the visitor a wealth of activities with leisure and cultural appeal.

East Grinstead has so much to offer with a host of annual events; a Vintage Bus day, a

East Grinstead Tourist Information Library
 Buildings, West Street,
 RH19 4SR 01342 410121
 tourism@eastgrinstead.gov.uk
 www.eastgrinstead.gov.uk
 www.visiteastgrinstead.com

May Fair, a Donkey Derby, a series of one day music, picnic concerts: **East Court Live** and our Christmas weeks are amazing. You don't want to miss **'The Big Reveal'**, our festive window display and lights switch on in November. Visit East Grinstead; we're hoping to share all this and more with you.

Standen Cover Image: Andrew Butler



Designed, produced and printed by: FRONTLINE Tel: 01342 312570

Library Buildings, West Street, East Grinstead, West Sussex, RH19 4SR United Kingdom
 Tel 01342 410121 tourism@eastgrinstead.gov.uk www.eastgrinstead.gov.uk
Frontline are proud to be working in partnership with **East Grinstead Town Council**

Discover the High Street



Traditional values,
modern approach.

01342 324616

www.colesestateagents.com

sales@colesestateagents.com



Penny Farthing Jewellers

01342 323331

www.pennyfarthingjewellers.net

pfjvintage@gmail.com

F.A.ANDERSON

Gun Shop and
Country Clothing.

01342 325604

www.faanderson.co.uk

fandaanderson@btconnect.co.uk

SOMETHING ELSE

Fashion, Jewellery,
Italian Clothes & Accessories.

Suzi 07913 911030

somethingelsefashion@gmail.com



Independent TV &

Hi-Fi Specialist

01342 328065

www.futureaudio.co.uk

shop@futureaudio.co.uk

The Bookshop

Books, cards & tearooms.

01342 322669

www.eastgrinsteadbookshop.co.uk

eastgrinbookshop@talktalk.net



Middle Row Barbers

01342 312007

www.middlerowbarbers.com

eastgrinstead@middlerowbarbers.com

THE MARKET SQUARE

Food & Wine Company.

01342 300355

info@marketsquarefoodandwine.com



An independent, family run coffee
shop servicing locally roasted
coffee and fresh local produce.

01342 457157

www.facebook.com/nestsussex

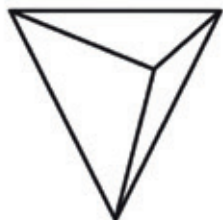
nest.sussex@gmail.com



Independent Hair Salon.

01342 328694

www.thewrighthairstudio.co.uk



VOLUME 1
CLIMBING



INDOOR BOULDERING CENTRE

Suitable for ages 4+

Birthday Parties

Kids Clubs

Coaching and Courses

01342 891292

Unit 12, Birches Industrial Estate, Felbridge

East Grinstead, West Sussex, RH19 1XZ

reception@volume1climbing.co.uk

www.volume1climbing.co.uk



Borde Hill Garden

Botanical heritage and stunning landscapes make Borde Hill the perfect place for horticultural enthusiasts, country lovers and families. Rare shrubs, champion trees and outdoor 'rooms'. Events, shop, plant sales, cafe. Dogs welcome.

01444 450326

www.bordehill.co.uk



British Wildlife Centre

See the finest collection of native wildlife in Britain with over 40 species on display from tiny mice to magnificent red deer... and everything in between! Open weekends and during state school holidays (excl. 24/25/26 Dec). On the A22 near Lingfield.

01342 834658

www.britishwildlifecentre.co.uk



Drusillas Park

Award winning Drusillas Park offers a fun-tastic & unforgettable family day out. Get ready to go wild as you come face to face with hundreds of exotic animals, explore the large adventure play areas and enjoy thrilling kids rides! Drusillas really is 'No Ordinary Zoo'! New for 2020 Jurassic Jungle; the land that time forgot (opens Easter).

01323 874100

www.drusillas.co.uk



Heaven Farm

Bluebell nature trail, woodland, ponds, wallabies and deer. Tea rooms serving coffee, lunches and cream teas. Latchetts Farm creamery serving delicious gelato ice cream. Camping and Caravanning. Other seasonal events. Open daily 10am - 5pm. Free entry into farm. Dogs welcome on leads.

01825 790226

www.heavenfarm.co.uk



High Beeches Woodland and Water Garden

A beautiful woodland garden sensitively planted with many rare trees and shrubs, a glorious wildflower meadow and spectacular autumn colour. A garden to enjoy throughout the seasons.

01444 400589

www.highbeeches.com





Sackville College

Built in 1609 as an almshouse and accommodation for the Sackville family. Enchanting quadrangle, banqueting hall, common room, study and beautiful Chapel. Open 18 June – 13 Sept. Adults £5, children £2 under 5 free. See website for further details.

01342 323414 www.sackvillecollege.org.uk



Sheffield Park and Garden

Spend time in the garden enjoying the views across the lake. Explore Walk Wood and the parkland before visiting the tea room, shop and plant centre. For opening hours and event listings, contact:

01825 790231

www.nationaltrust.org.uk/sheffield-park-and-garden



Standen House and Garden

Arts and Crafts family home with Morris & Co. interiors, set in a beautiful hillside garden just outside East Grinstead. Open 363 days a year (closed 24 & 25 Dec).

Call **01342 323029**

for details and opening times or visit

www.nationaltrust.org.uk/standen



Volume 1 Climbing

Volume 1 Climbing is an exciting indoor bouldering centre with beautiful cafe. We provide a range of sessions and courses for both kids and adults of all ages and abilities.

01342 891292 www.volume1climbing.co.uk



Wakehurst

Wakehurst, Kew's wild botanic garden in Sussex, is the perfect day whatever the season. Over 500 acres of gardens and woodlands, and home to the Millennium Seed Bank, the world's largest wild seed conservation project.

01444 894067

www.kew.org/wakehurst



MOVING IN THE AREA?

Our team is here to help

01342 324616

41 High Street,
East Grinstead
West Sussex, RH19 3AF



POOH CORNER HARTFIELD • EAST SUSSEX

VISIT CHRISTOPHER ROBINS WORLD FAMOUS SWEET SHOP
ON THE EDGE OF THE 100 ACRE WOOD! NOW A TEA ROOM,
TOY SHOP AND MUSEUM DEDICATED TO THE LITTLE BOY AND HIS BEAR.

www.poohcorner.co.uk



01825 790226

www.heavenfarm.co.uk

FARMING HISTORY IN THE HEART OF SUSSEX

BLUEBELL nature trail, wallabies, rural life museum. The Stable Tea Rooms provide light lunches and cream teas. Latchetts Farm, traditional Sussex creamery serving delicious gelato ice cream. Camping and caravanning. Try & buy our family farm fresh pasteurised milk.

Other seasonal events. Free farm entry, open daily from 10am. Dogs on a lead please. Rural life museum by appointment.



Hairstyling for Men & Women

- open 6 days a week
- 9 experienced stylists
- traditional gentlemen's hairdressing
- appointments available but not always necessary

Portland Hall 48 Portland Road
East Grinstead RH19 4DZ

Tel: 01342 328694

email: wrighthairstudio@btconnect.com

web: www.thewrighthairstudio.co.uk

HAMMERWOOD PARK



Spectacularly sited within historic parkland, Hammerwood Park was designed in 1792 by Benjamin Latrobe, architect of the White House in Washington D.C. Historic musical instrument collection. Monthly concerts.

Open; June - September
Wednesdays & Saturdays.
Guided tours 2pm Tour price £9.
Teas served in the Elgin Room.
www.hammerwoodpark.co.uk

Home to 'Rebuilding Bodies & Souls', the story of Sir Archibald McIndoe and the famous WW2 Guinea Pig Club, the museum tells the history of East Grinstead and its surrounding areas stretching back nearly a thousand years.



Children's activities and temporary exhibitions take place through the year.

East Grinstead Museum, Old Market Yard,
Cantelupe Road, East Grinstead, RH19 3BJ
www.eastgrinsteadmuseum.org.uk
info@eastgrinsteadmuseum.org.uk
Tel. 01342 302233





Make a sandcastle
(or visit a real one)



Bamburgh Castle, Northumberland
Nearest site Berwick Seaview

Join us
for just

£54

a year

Join today and save on
access to more than 2700
sites across the UK and Europe.

Get away, your way - visit camc.com/join
or call 01342 488120 to join today.



COOLINGS

WYCH CROSS GARDEN CENTRE

Established as a rose nursery over 50 years ago, nestled on the edge of the Ashdown Forest, the garden centre has a huge range of predominantly homegrown and locally sourced seasonal bedding, herbaceous, perennial plants, shrubs as well as hundreds of rose varieties.

The shop is stocked with a

large selection of gardening products, bird, wildlife and lawncare, a Cook concession and PTMD luxury home furnishings.

The Hybrid Tea Room has 2 terraces and beautiful views over the rose nursery, we serve homemade cakes, afternoon teas, breakfast and lunch hot and cold food.

OPEN 7 DAYS A WEEK, VISIT US AT FOREST ROW,
EAST SUSSEX RH18 5JW

01342 822705 WWW.COOLINGS.CO.UK

WYCHCROSS@COOLINGS.CO.UK



Space to breathe

made at Sheffield Park

Acres of landscape garden
bordered by historic parkland
and woodland

nationaltrust.org.uk/sheffieldpark

7th - 9th
August 2020



Join us for music,
demonstrations, tours,
a country fair and
displays along the line.

Bluebell Railway

Gift shop and
model railway
stockist

SteamWorks!

Family Events

Steam engines and
vintage carriages

Living History

Museum

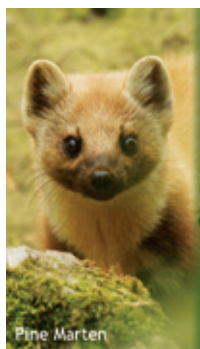
Children's play areas



Steam trains between

Sheffield Park & East Grinstead

www.bluebell-railway.com 01825 720800



Pine Marten

British Wildlife Centre

Discover over 40 different British wild species
from tiny harvest mice to magnificent red deer

- badgers ● foxes ● wildcats ● owl displays
- walk among red squirrels ● otters & more

It's a REAL natural history experience!

OPEN EVERY WEEKEND & DAILY DURING
STATE SCHOOL HOLIDAYS (excl 24/25/26 Dec)

Eastbourne Rd (A22), Newchapel, Lingfield RH7 6LF

01342 834658

www.britishwildlifecentre.co.uk




Standen House & Garden

Arts and Crafts family home
with Morris & Co. interiors, set
in a beautiful hillside garden just
outside East Grinstead. Dogs
welcome in garden and estate.
nationaltrust.org.uk/standen

© National Trust 2020. The National Trust is an
independent registered charity, number 202946.
Photography © National Trust/Jarvis Dobson #nationaltrust



A photograph of two young boys running through a field of purple flowers. The boy in the foreground is wearing a dark jacket and a cap, while the boy behind him is wearing a grey vest. They are both smiling and appear to be enjoying the outdoors. The background is a lush green woodland with many trees.

**Welcome to Wakehurst,
Kew's wild botanic
garden in Sussex**

Wakehurst

**Over 500 acres of stunning gardens,
magnificent woodlands, tranquil nature
reserve and natural play spaces.**

For more details and events throughout
the year visit kew.org/wakehurst

Royal Botanic Gardens
Kew



Family Farm Fun!

Open all year round to
discover, explore and play.



Book tickets in advance and save

www.godstonefarm.co.uk

