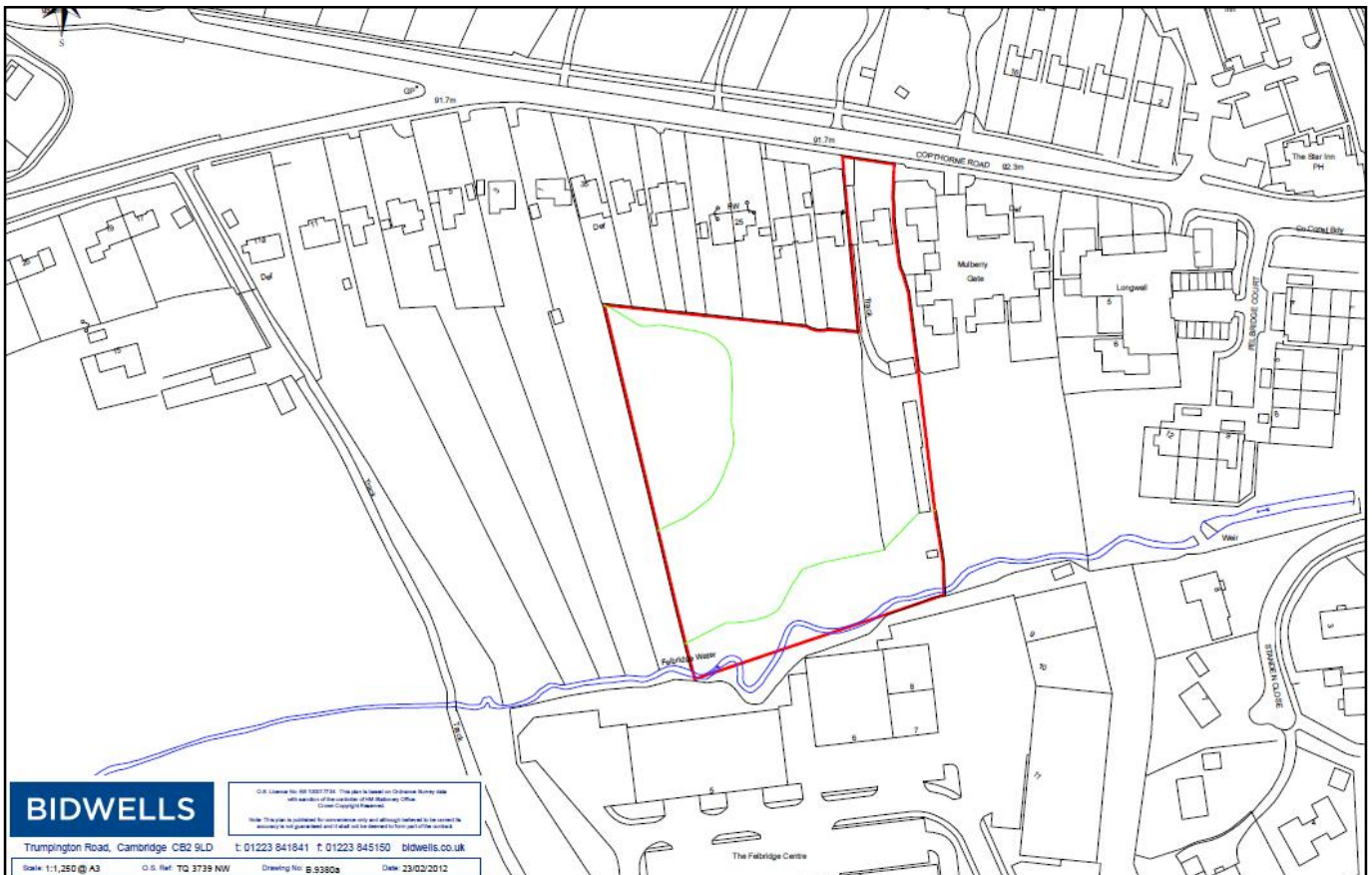




PUBLIC EXHIBITION



Bidwells, on behalf of Countryside Properties, invite you and your neighbours to a public exhibition to find out more about an emerging planning application for the development of 27 family sized homes at the above site. Representatives of the consultant team will be available to discuss the proposal and would welcome your comments. If you are unable to attend please feel free to provide comments using the details below.

Date: Thurs 8 March 2012
from 5pm – 8:30pm

Venue: Imberhorne School Hall
Imberhorne lane
East Grinstead
RH19 1QU

For further information:

Tel: 01923 272819

Email: copthorneroad@bidwells.co.uk